



Biotechnology uses biological systems and living organisms to make or modify products. It is based on advanced scientific knowledge in biology and engineering. Numerous fields of application :



HEALTH



INDUSTRY



ENVIRONMENT



MARINE BIOTECH



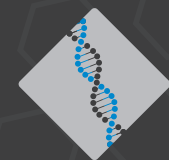
FOOD SCIENCE

"ESBS students are educated to deal with multicultural experiences. As a HR responsible, I can say: ESBS students are trained to be problem solvers and solutions finders."

Christian Döhning, Head training and development at Synthes GmbH, Switzerland

"I am very proud of the ESBS because it is a sort of material achievement - research is often non material. It provides to its students the chance to use their brains to improve life for mankind."

Pr. Pierre Chambon, Co-founder of ESBS



esbs

école supérieure de biotechnologie

STRASBOURG

Parc d'innovation - Pôle A.P.I.
300, boulevard Sébastien Brant
CS 10413 - 67412 Illkirch Cedex

Service Scolarité

+33 (0) 3 68 85 46 82 (ou 46 80)

scolarite-esbs@unistra.fr

esbs.unistra.fr

Strasbourg University contact

Pr. Georges ORFANOUDAKIS

scolarite-esbs@unistra.fr

Basel University contact

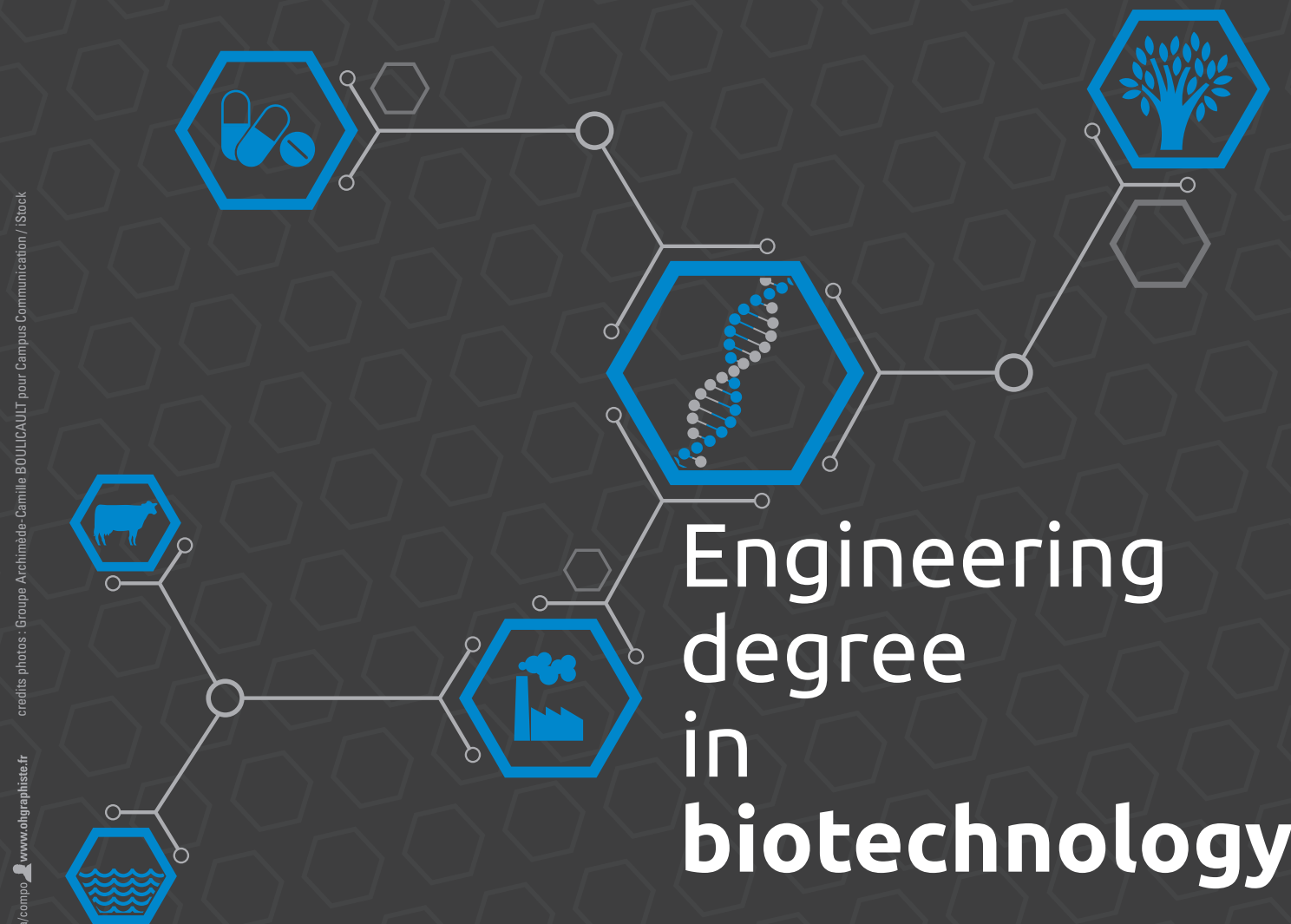
Pr. Dr. Attila BECKSEI

attila.becskei@unibas.ch

Freiburg University contact

Pr. Dr. Thomas LAUX

laux@biologie.uni-freiburg.de



Engineering degree in biotechnology



unistra.fr



The **Ecole Supérieure de Biotechnologie de Strasbourg** is a multinational state school where German, French and Swiss students follow a 3-year (equivalent to Bachelor+2) engineering program in biotechnology, in a multicultural and multilingual environment.

Education relies on the skills of our teachers, researchers and engineers from **our three partner universities as well as on our associated research centre, IREBS.**



“Bio-engineer” education is based on a solid culture of basic sciences, engineering sciences, languages, as well as economic, social and human disciplines. A multi-disciplinary course due to the partnership of three centres : Basel, Freiburg and Strasbourg.

The ESBS offers an exceptional environment for studies. Ideally situated at the heart of the upper Rhin Valley region, the school benefits from a scientific and multicultural environment in particular due to the presence of cutting - edge laboratories and companies (Evolva, Roch, Merck Millipore, Sanofi, Transgène, Novartis, Lilly).

Students and alumni associations at ESBS

- **Amicale at ESBS**- www.esbs-amicale.eu
Orientation weekends, Inter Agros, Events
- **N.G.B. - New Generation of Biotechnologists** - www.ngb-france.fr
Scientific events, International forums
- **A.A.E. - Alumni association** - www.esbsalumni.fr
Career and internship opportunities, ESBS promotion



: Courses at ESBS

- Molecular and Cellular Biology
- Bioinformatics
- Bioproduction
- Biotech data science
- Environmental biotechnology
- Microbiology
- Genetics
- Molecular and cellular engineering
- Synthetic Biology
- Human social and economic course

Cutting - edge technologies applied in two sectors of industry:



The biotechnology study program at ESBS lasts three years. Most of the courses are held in Strasbourg, but some theory courses, practicals and projects take place in Basel and Freiburg. Courses and examinations are in French, German or English.

Year 1 Scientific common basis and practical training

- **Semester 1**
 - 3 weeks of intensive training (english, german, french) at the CRL (language resources centre)
 - 3 weeks in Basel
- **Semester 2**
 - minimum 8 weeks of internship (from May to August)

Year 2 Biotechnology basics - introduction to technological sectors

- **Semester 3**
 - 2 weeks in Basel
- **Semester 4**
 - 6 weeks in Freiburg
 - Speciality option
 - Projects in Strasbourg, Basel, Freiburg

Year 3 Elective courses : technological fields and industrial sector Projects and internships

- **Semester 5**
 - Projects in Strasbourg, Basel, Freiburg
- **Semester 6**
 - 6 to 8 months end of studies internship (january to august)

Internships

- 14 weeks compulsory within a company
- minimum 2 internships in France or abroad
- 6 to 8 months end-of-studies internship



Admission :

to 1st year -
2nd year of Bachelor

to 2nd year -
M1 + B1 level
in German and French

Online pre registration:
<http://esbs-unistra.fr>

(opening end of February, beginning of March)